

# GCV200H-S3-AL-SD

## Technical Documentation



Published on 11.02.2022

## MODEL GCV200 SPECIFICATIONS

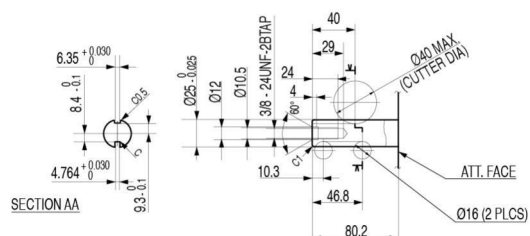
Engine type	4-stroke single cylinder OHV petrol engine vertical shaft
Cylinder sleeve type	Aluminium cylinder
Bore x Stroke	66 x 59 mm
Displacement	201 cm <sup>3</sup>
Compression ratio	8.0 : 1
Net power	4.2 kW ( 5.6 HP ) / 3600 rpm
Cont. rated power	2.8 kW ( 3.8 HP ) / 3000 rpm
Max. net torque	12.7 Nm ( 1.30 kgfm ) / 2500 rpm
Fuel tank capacity	0.91 Liter
Fuel cons. at cont. rated power	1.4 L/h - 3000 rpm
Engine oil capacity	0.40 Liter
Dimensions (L x W x H)	415 x 330 x 359 mm
Dry weight	10.1 kg
Lubrication system	Forced splash
Recommended oil	APISJ-SAE 10W30
Ignition system	Ignition coil with fixed timing, Shut off by connecting the primary coil to ground
Fuel system	Float carburator
Governor	Mechanical centrifugal
Allowed ambient temperature	Between +5°C and +40°C
Allowed altitude	Between 0 and 1500 m, above 1500 m replace the main jet
Maximum inclination	Maximum 15° in every direction
PTO shaft rotation	Counterclockwise from PTO side

**GCV200H-S3-AL-SD SPECIFICATIONS**

Shaft type	N3
Shaft diameter	25 mm
Shaft length	80,2 mm
Shaft thread	Int 3/8-24 UNF
Shaft keyway	2 woodruff
Top cover	Yes
Air cleaner	Paper
Control base	Fixed RPM type
Flywheel brake	Yes
Flywheel type	Alu
Auto return choke	No
Autochoke	Yes
Electric start / charge coil	No
Recoil starter	Long rope
Deflector kit	No
Spark arrestor	No
Supplied loose	None
RPM	2900 +0/-100
EU Exhaust	Yes
US EPA Exhaust	No
US EPA Evaporative	No
CARB Exhaust	No
CARB Evaporative	No
China Exhaust	No
Australia RCM	No
Non Certified	No

## ILLUSTRATIONS GCV200H-S3-AL-SD

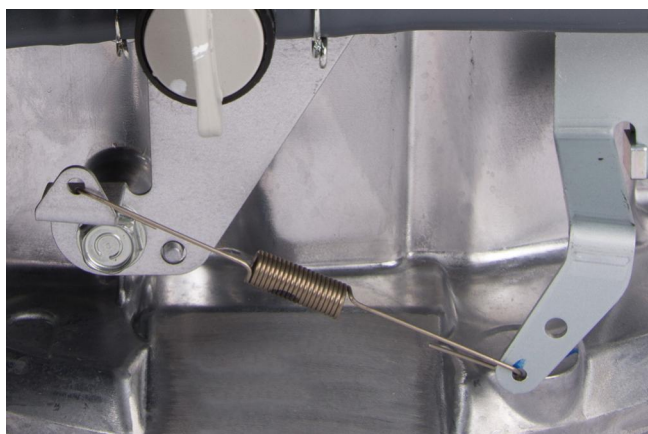
**Shaft type**



**Air cleaner**



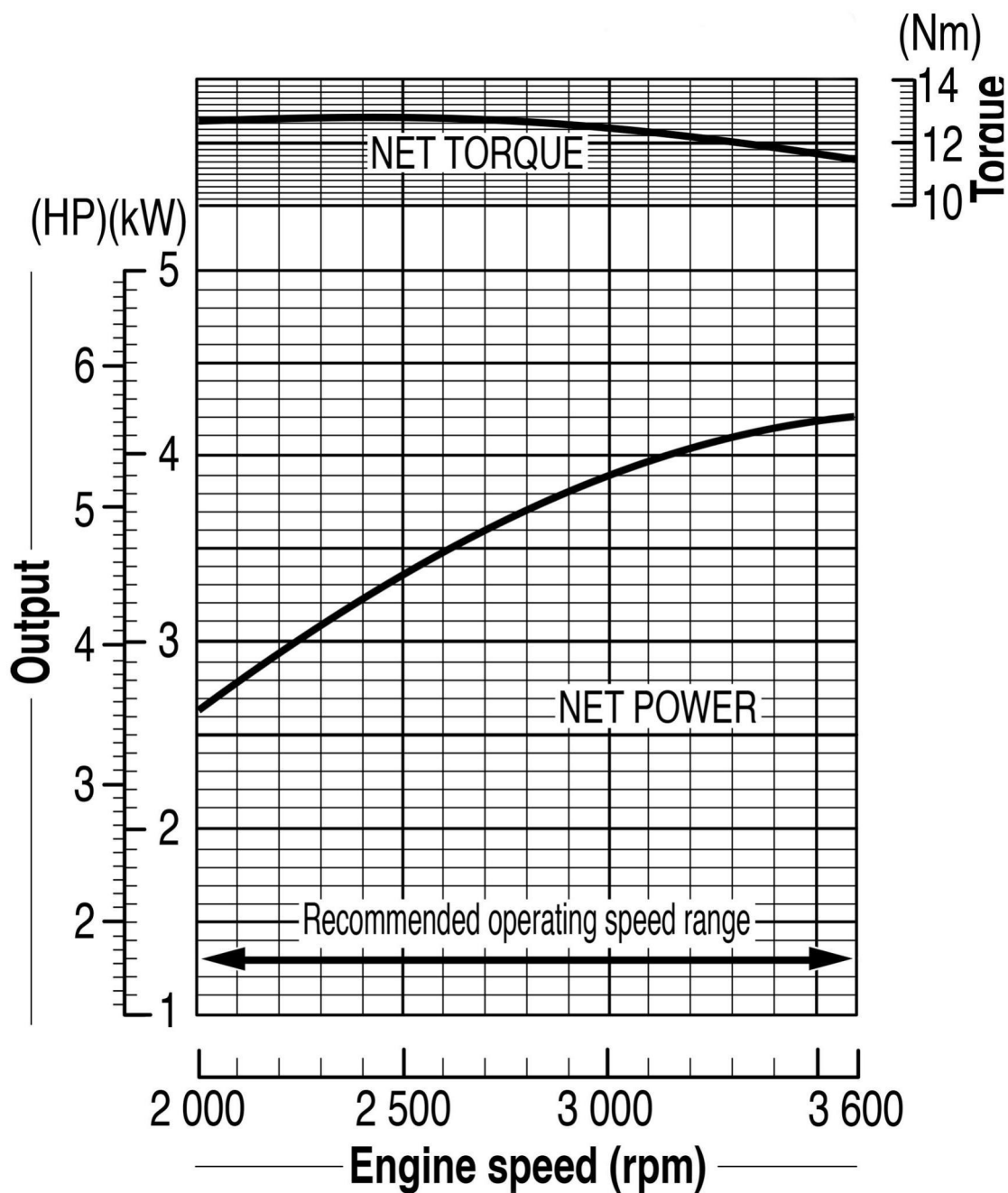
**Throttle control**



**Start / stop**

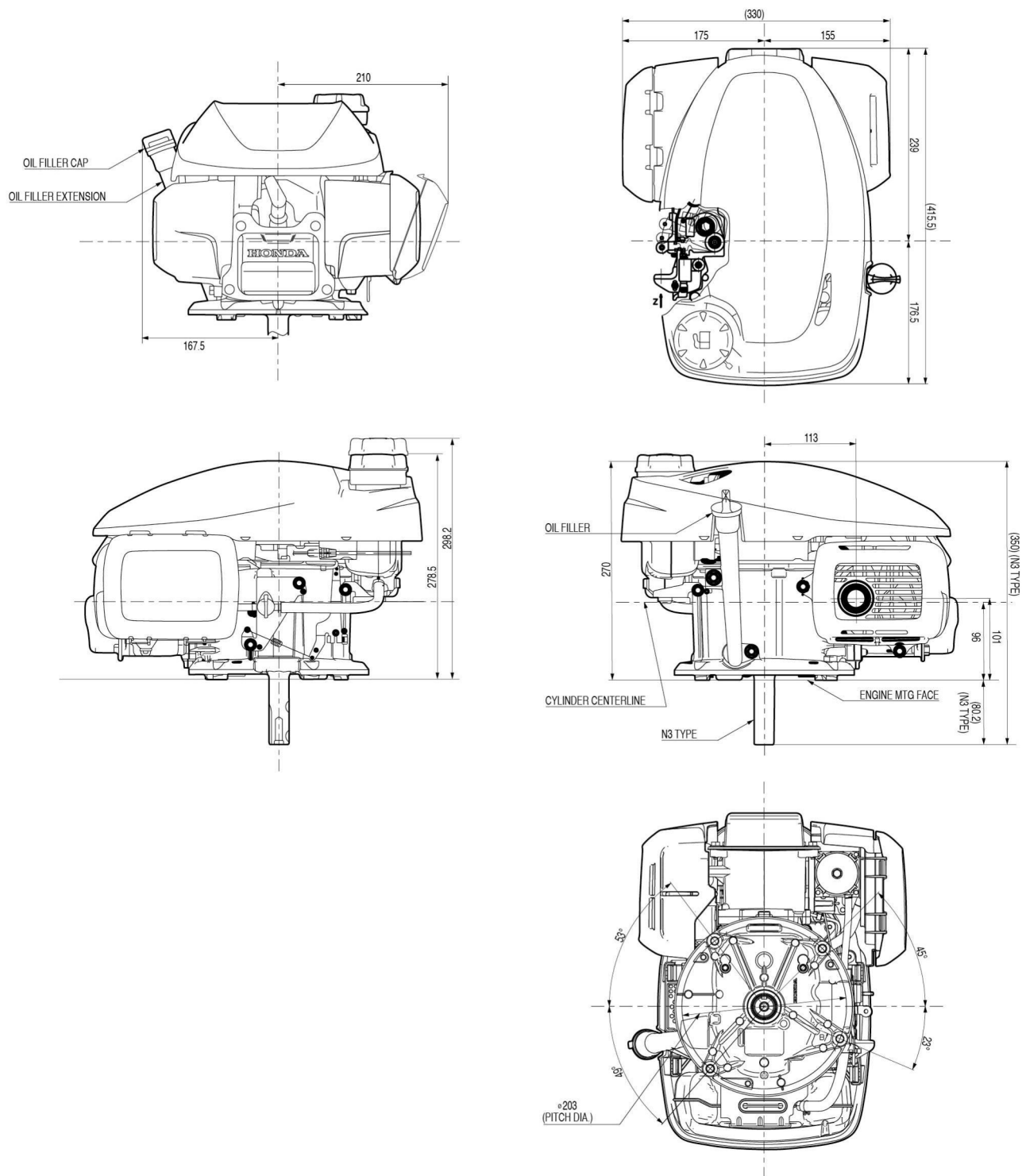


## POWER CURVE GCV200



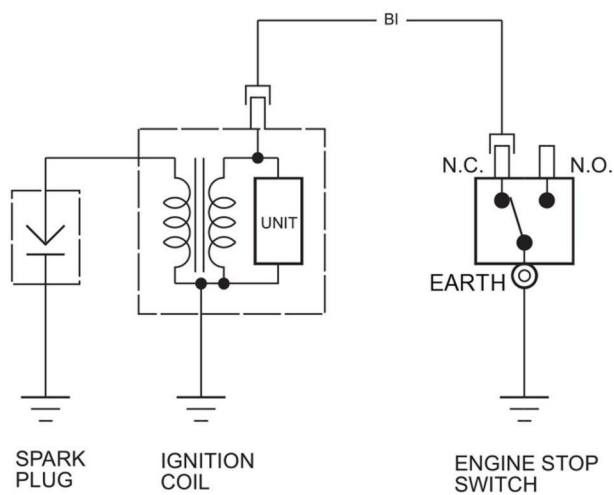
The power rating of the engine indicated in this document is the net power tested on a production engine for the engine model and measured in accordance with SAE J1349 at a specific rpm. Mass production engines may vary from this value. Actual power output for the engine installed in the final machine will vary depending on numerous factors, including the operation speed of the engine in application, environmental conditions, maintenance, and other variables.

## TECHNICAL DRAWING GCV200



These technical drawings are the standard drawings, depending on the specifications of the engine the dimensions can deviate from the standard dimensions.

**WIRING DIAGRAM GCV200**



Bl	Black	Br	Brown
Y	Yellow	O	Orange
Bu	Blue	Lb	Light blue
G	Green	Lg	Light green
R	Red	P	Pink
W	White	Gr	Gray

ENGINE STOP SWITCH CONNECTION TABLE			
	N.C.	N.O.	EARTH
FREE			
PUSH			

The standard wiring diagram is included in this document. Depending on the specifications of the engine the wiring diagram can deviate from the standard one.

## SERVICE



### At your service ...

Over 700 Honda Engine Specialists all over Europe for maintenance and repair of your Honda engine offering:



Repair  
workshop



Warranty  
handling



Spare parts  
retail outlet



Replacement  
engines

Visit our website [www.honda-engines-eu.com](http://www.honda-engines-eu.com) and find your local Honda Engine Specialist, the correct spare parts for your engine at the online spare parts catalogue, and much more information on the Honda engines.

#### Warranty period for GCV200

Non-commercial use	24 months
Commercial use	3 months

These warranty conditions are valid for following countries:

Austria, Belgium, Croatia, Cyprus, the Czech Republic, Denmark, Finland, France, Germany, Gibraltar, Greece, Hungary, Iceland, Ireland, Italy, Luxemburg, the Netherlands, Norway, Poland, Portugal, Slovakia, Spain, Sweden, Switzerland, Bulgaria, Latvia, Estonia, Lithuania, Malta, Romania, Slovenia, the Canary Islands, the UK, Turkey, Russia and Macedonia.

Other warranty conditions for Belarus and Serbia.

For countries, which are not listed, please consult with the European Engine Centre after sales service department in order to check the availability of a Honda distributor and the applied warranty conditions.

The invoice of the machine must be used to prove the date of purchase.

All content of this document (text, pictures, images, graphs, etc) is owned by Honda and its affiliates, and is protected by copyright law. It is prohibited to copy, modify, reproduce, distribute, sell or publish the material for commercial use or gain without Honda's written permission. Honda reserves the right to modify the content without any prior notice. All efforts are made to keep the information up-to-date and accurate. The images in the document are the real images of the specific engine unless mentioned otherwise.

Honda is not responsible for any damage caused to third parties through the incorrect or incomplete use, direct or indirect, of information from this document.

The accessories included in the document are not supplied with the engine and need to be ordered separately.